



THE WOODS

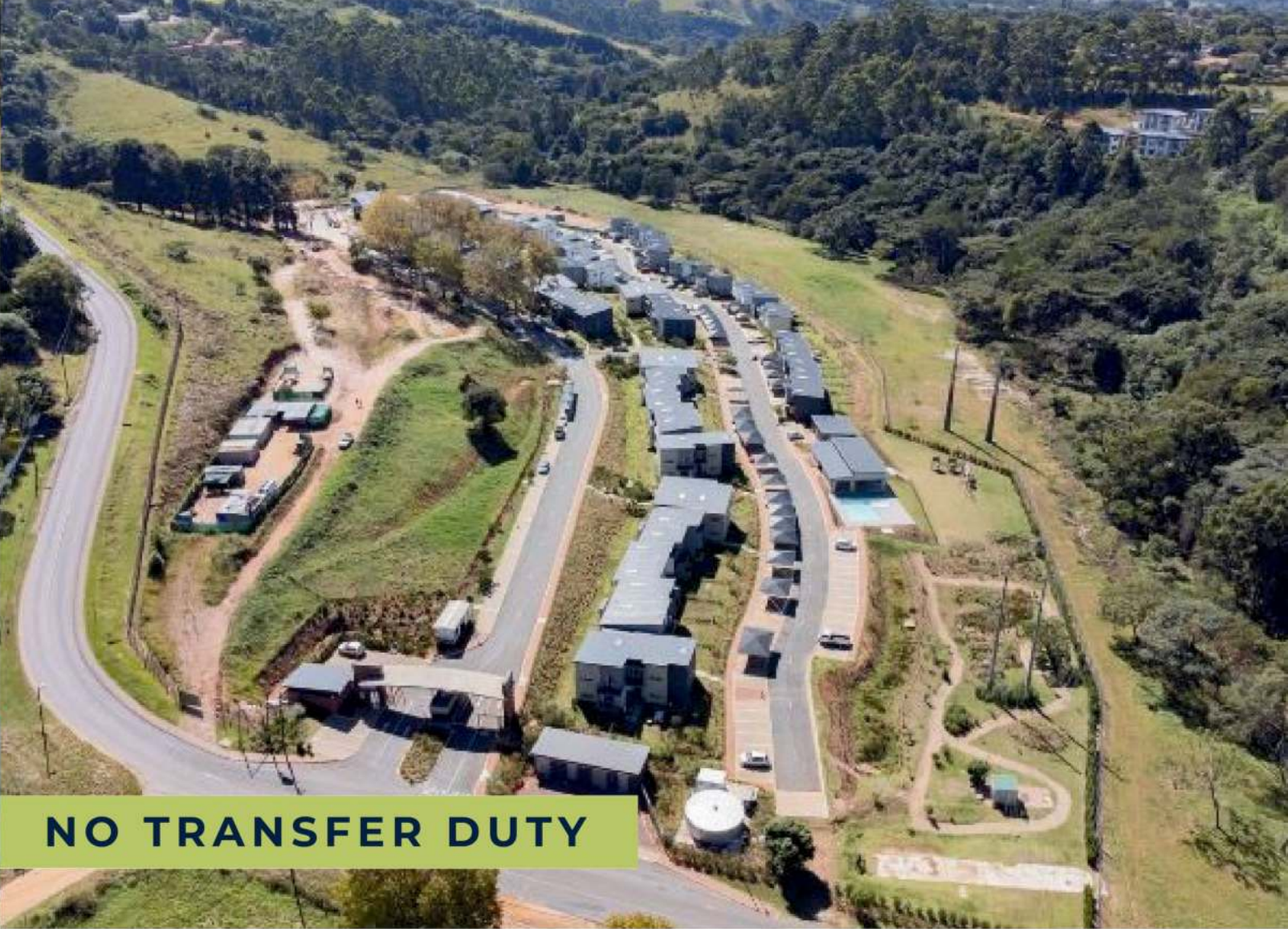
WATERFALL



oobahomeloans
Home loan comparison service



Expertise Built Through Generations of Trust



NO TRANSFER DUTY

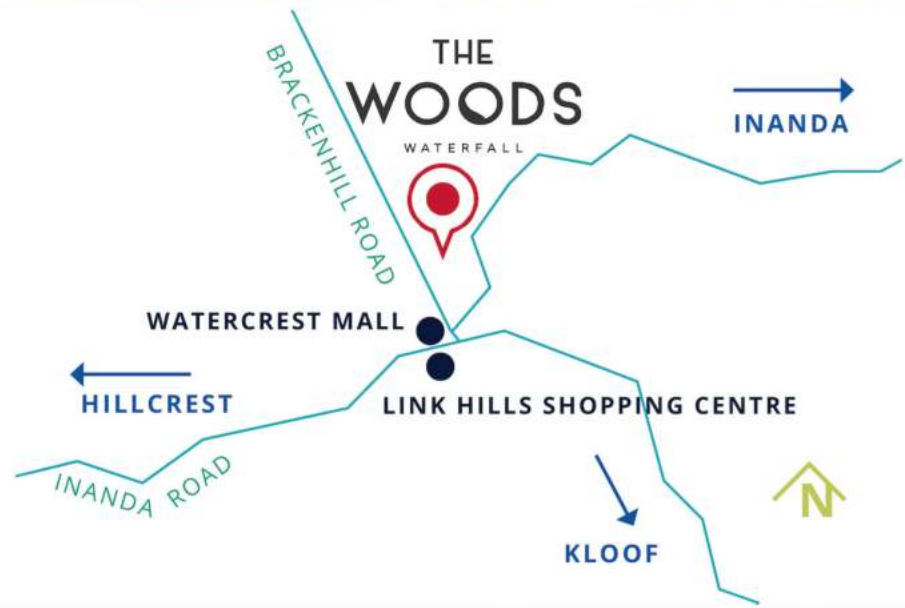
WITHIN A 10KM RADIUS

10 SCHOOLS

4 SHOPPING CENTRES

1 HOSPITAL

1 GOLF COURSE



- FACIAL RECOGNITION SYSTEM
- FIBRE TO THE HOME
- PET-FRIENDLY
- CLUBHOUSE WITH BRAAI PODS & POOL
- 24 HOUR PATROL
- NATURE TRAILS
- SMART METERS
- BIKE TRACK
- JUNGLE GYMS



1, 2 & 3-BEDROOM HOMES

WITHIN A SECURE GATED ESTATE

FROM R849 000

CONTACT US
www.thewoodswaterfall.co.za | 082 924 7302 | 031 765 5326

CONTACT US
www.thewoodswaterfall.co.za | 082 924 7302 | 031 765 5326



The Woods weaves the beauty of nature into everyday life. As a secure family gated estate just a stone's throw from the centre of Waterfall, The Woods offers accessibility, convenience and security. Situated on rolling green hills, North-West of Durban and adjoining Hillcrest, **Waterfall is now one of Durban's most beautiful suburbs**. The adult population of the area has increased by more than 70% – a testament to the desirability of the area.



PURCHASE OPPORTUNITIES

Choose your home in 1, 2 and 3-bedroom apartments and townhouses. The Woods is a safe community, with facilities for the family. Ground floor apartments & townhouses gives you an exclusive-use garden, perfect for pets or time away from the indoors for a quick breather, to watch the sun set or simply to enjoy the beauty of nature around you.

With Sectional Title homes, The Woods gives buyers the **chance to invest their money into an asset class that is growing in strength day by day**

APARTMENTS & TOWNHOUSES FROM*

1 1	R 849 000	2 2	R 1 199 000
2 1	R 1 099 000	3 2	R 1 299 000

LOW MONTHLY LEVY

NO TRANSFER DUTY

BUY DIRECT FROM DEVELOPER

R 5000 DEPOSIT

PRICE IS SUBJECT TO CHANGE



GREEN LIVING

As a green development, The Woods gives you the opportunity to actively play a part in saving money, growing the value of your investment and living greener. Becoming part of The Woods not only means investing to see your wealth grow but also day-to-day cost saving for you in real time. The overall design of The Woods is inspired by green living and every aspect of your home has been considered in the way it consumes energy and ultimately, how that impacts your pocket.



DO I QUALIFY?

Scan the code and follow the steps

oobahomeloans
Home loan comparison service



North-East Facing homes



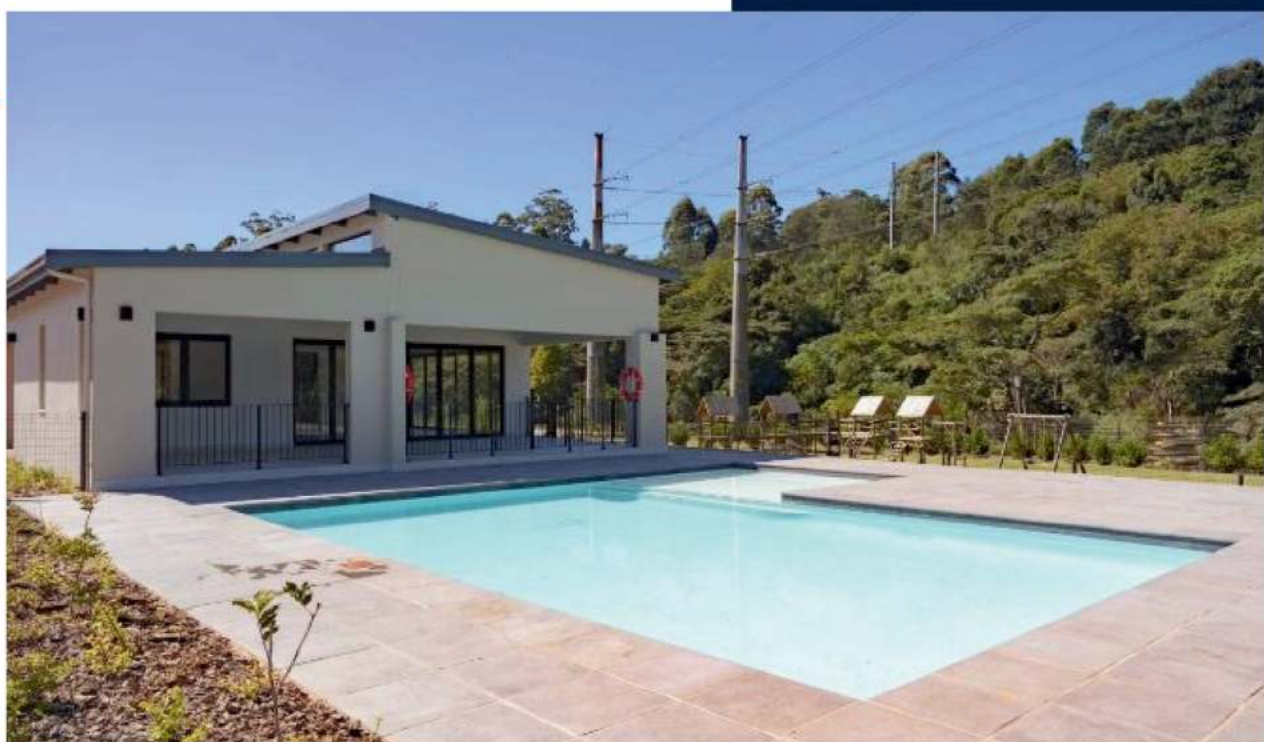
Time-of-Savings geyser



Ambient & energy-saving lightbulbs



Reduced environmental impact



THE BEAUTY OF NATURE

The layout of The Woods gives precedence to the unbelievable natural beauty within the estate. Featuring spacious landscaped areas, as well as access to the adjoining forest area, children and families will be inspired to spend time together in the outdoors. With planted trees, grassland and an established forest, the beauty of nature is part of everyday life.

A linear park is dotted with plane trees, with a pathway in the centre which leads you through the central green zone and the Clubhouse.